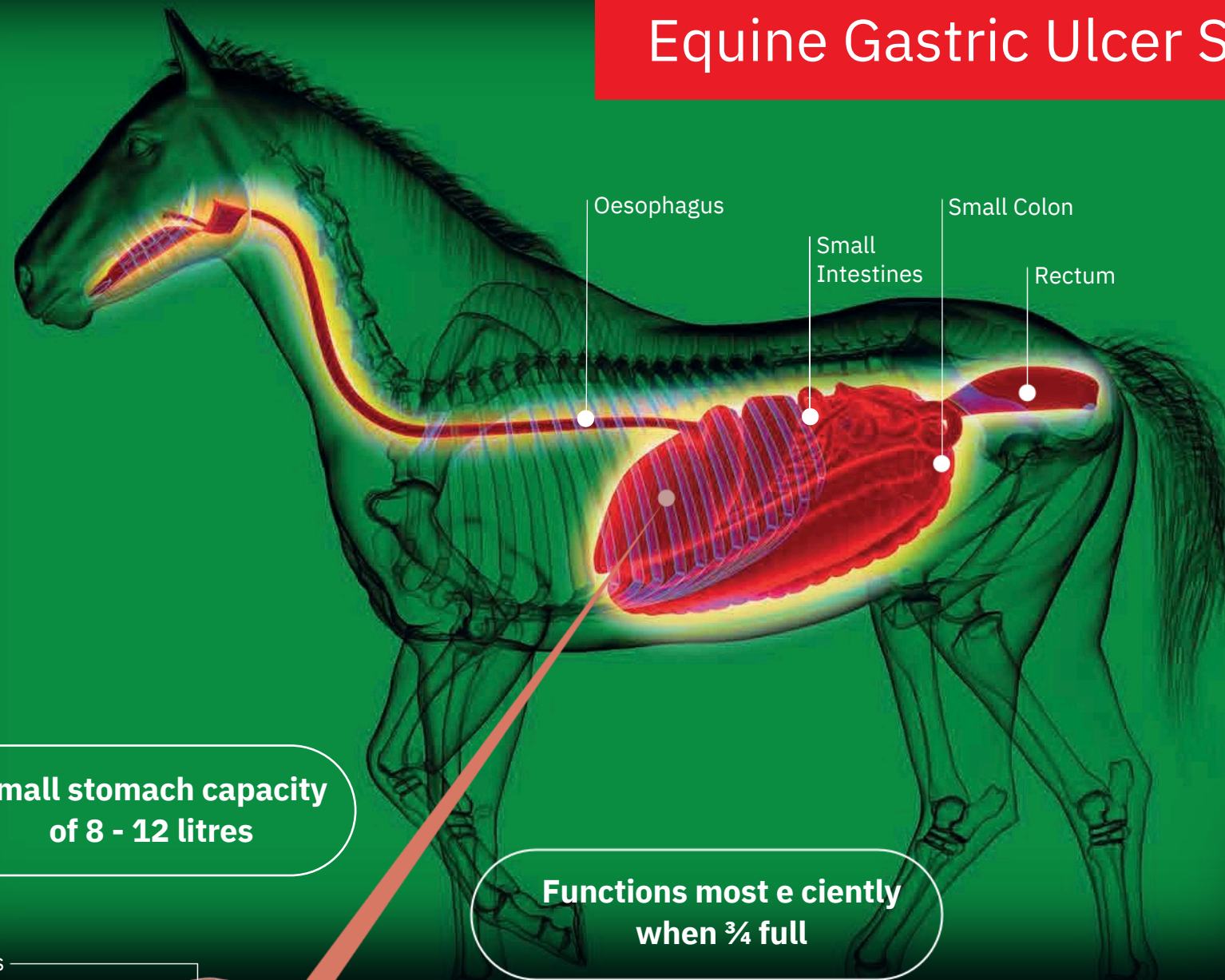


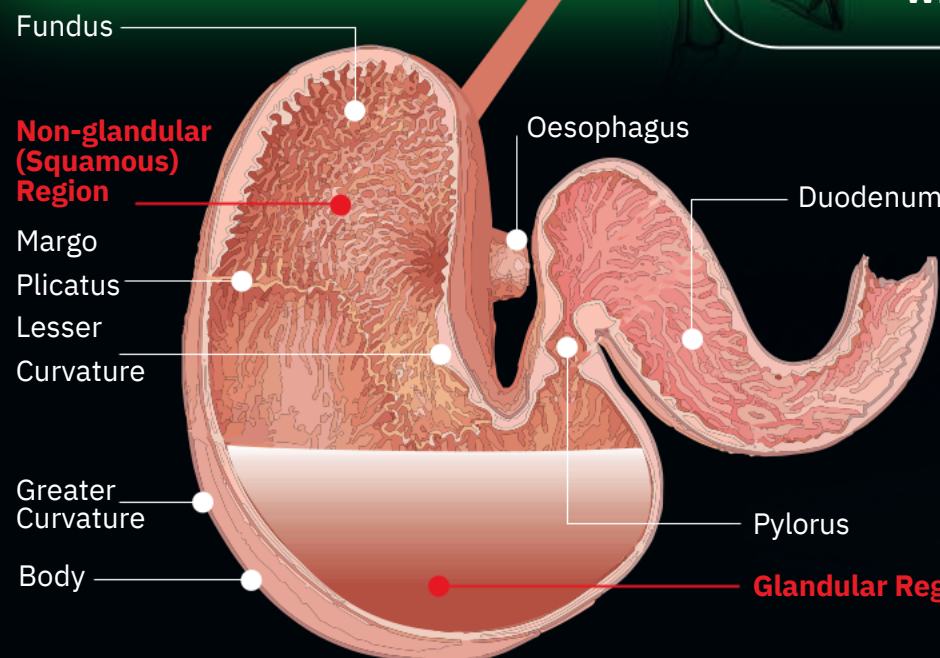
UnBeetable Gut Feeling

Equine Gastric Ulcer Syndrome



Small stomach capacity of 8 - 12 litres

Functions most efficiently when $\frac{3}{4}$ full



Continuous gastric acid secretion around 1.2 litres an hour

Transit time from as little as 20 minutes up to several hours



Prevention and Management

- Feed ad lib forage
- Reduce starch intake
- Feed small and regular meals
- Feed fibre before exercise
- Provide constant access to water
- Reduce stress

Fibre Beet is a superior, highly palatable conditioning mash suitable for equines prone to ulcers, as part of a balanced diet.

- Slow-release super fibre blend of unmolassed beet pulp and alfalfa to help promote condition without the fizz.
- Natural beet pectins, aided by natural emulsifiers from the added oat fibre, bind to, and extend, the mucosal lining in the stomach protecting the stomach from acid splash.
- Added Alfalfa to soak up excess acid in the stomach, supporting the buffering of saliva, and maintaining the acidity around the optimum pH4
- A natural prebiotic and excellent for gut health.
- Low starch 4% and sugar 6% formula



Suitable for equines prone to gastric ulcers as part of a balanced diet

Fibre-Beet has been awarded the Gastric Ulcer Feed Assurance Mark by the British Equestrian Trade Association.



T: +44(0) 1765 680300.
E: enquiries@britishhorsefeeds.com

@britishhorsefeeds
www.britishhorsefeeds.com